


Pleasant Oaks Gem & Mineral Club of Dallas, TX

Chips and Chatter



May 2006
Vol. 40 Issue 5

Features

Field Trips	3
The Official Sport of Rockhounding	3
Question of the Month - Jade	5
Safety Report	6
TXI Field Trip	4
Words From William (SCFMS President)	6

Monthly Columns

Federation Page	5
Metroplex Clubs	3
Minutes	2
Question of the Month	5
Shop Calendar	7
Shows	3

Workshop, Meeting, etc.

- Check out our web site for a color version of the Chips and Chatter
- Open Shop on Monday evening and Saturday morning
- Metal Etching Class - in work

Copyright 2006 by D.C. Shurtz. Unless otherwise noted, permission granted for non-commercial reproduction of articles provided they remain essentially intact and credit is given to the author and original source. Where noted, the author retains the copyright and must be contacted for permission to reproduce the article. All articles may also be used as reference provided citation is given.

Purpose

The Pleasant Oaks Gem and Mineral Club of Dallas is organized for charitable and educational purposes to promote interest in the various earth sciences, in particular those hobbies dealing with the art of cutting and polishing gemstones, the science of gems, minerals and metal crafts, as well as their related fields.

Monthly Meeting

**Monthly Meeting: April 6th at 7:30 PM
Garland Women's Activities Building
713 Austin, Garland, TX**

Presentation

**Randy Smith
Dallas G&MS**

Show & Tell

Multi-colored Agates

Club Officers for 2006

President: Beth Hollingsworth, 972-226-1543
1st VP: Charles Black, 940-381-6913
2nd VP: Brenda Dowell, 972-771-9502
Treasurers: Delbert Grady, 972-235-6575
Secretary: Renee Wofford
Editor: Don Shurtz 972-509-2821
E-mail: don.shurtz@gmail.com
4004 Dublin Road
Parker, TX 75002-6526

Pleasant Oaks Gem & Mineral Club Minutes

Minutes – April 6, 2006 General Meeting

The meeting was opened at 7:06 p.m. by President Beth Hollingsworth.

A welcome and introduction of guests revealed that several visitors were present as a result of the INTERGEM show and students from Warner Ragan's class at Eastland College.

A Sunshine report informed us that long-time member, Joyce Sawyer, passed away. Our thoughts and prayers will be her family.

1. Officer Reports:

- 1st Vice President – not present.
- 2nd Vice President – Brenda gave an inspiring report of changes improvements going on at the shop. Many new classes are being offered. The shop also needs donations of materials for improvement purposes, such as paint, etc. Call Brenda for more information. Due to continued work, the shop equipment is in better repair than most members have seen. Some of the upcoming classes include collection display, basic qualifying, photography, wire-wrapping, and according to Wanda – Egg Location techniques.
- Treasurer's Report –Del Grady presented the Treasurer's Report. Motion to accept report was made by Donette Wagner and seconded by Robert Richter. *Motion carries.*
- Editor's Report –Don Shurtz again voiced his long-standing request for publishable material. Please help Don out with contributions for the Chips and Chatter.
- Secretary's Report - Motion to accept minutes from March meeting as published in the Chips and Chatter was made by Donette Wagner and seconded by Robert Richter. Motion carries, minutes will be filed as published.

2. Old Business:

- Proposed changes to the by-laws of POGMC presented. A motion was made by Donnette Wagner to accept these changes and was seconded by Scott Wingo. By vote, the motion passed unanimously.
- Dan gave a report on the Science Fair judging that we participated in. This year's winner of the Pleasant Oaks tumbler was a true geological-type project – about North Texas fossils. Thanks to all the members who donated their time on a Saturday to help with the judging.

BREAK TIME

3. Program:

- Robert Richter gave an interesting talk on oil and gas exploration. His 40 years of experience enlightened the talk and the group.
- The Show and Tell displayed a nice array of stone and other decorated eggs.

4. Membership: Maria LeJeune applied for membership with POGMC. A motion to accept her as a member was made by Donnette Wagner and was seconded by Robert Richter. *Motion Carries.*

The raffle drawing was conducted and the meeting was adjourned.

Respectfully Submitted,

Renee C. Wofford

Field Trips

ALPINE, TX: Completed, 8 - 16 April. Brad Tanas organized the trip.

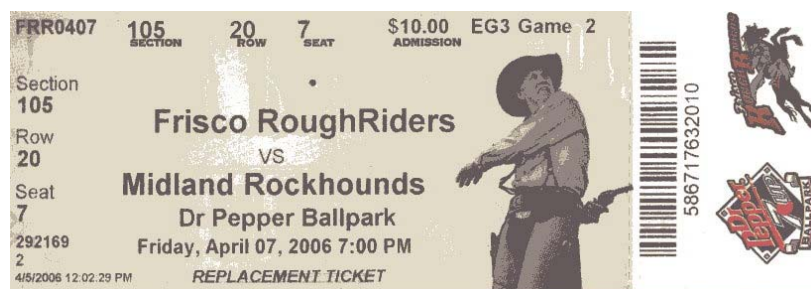
TXI: Completed, 8 - 16 April. David Dobson organized the trip.

COLORADO: Under discussion is an extended field trip this summer to Colorado. Early plans are to go in late July and return in early August. Mineral collecting is expected to be excellent. More details when available.

The Official Sport of Rockhounding?

Don Shurtz, Pleasant Oaks Gem and Mineral Club of Dallas

Is baseball the official sport of the Rockhounding Hobby? It must be! You see, we even have our own team, The Midland RockHounds. No, this is not a April Fool's joke or even a May Fool's joke - there really is a Midland RockHounds baseball team. They are a Double A affiliate of the Oakland Athletics Major League Baseball (MLB) team and play in the same league as the Frisco RoughRiders. As definitive evidence that this is not a joke, here is a copy of a ticket. If more proof is needed, check out their website at <http://www.minorleaguebaseball.com/app/index.jsp?sid=t237>.



At the time of this article, our very own RockHounds are trailing Corpus Christi by 1/2 game in the southern division of the Texas League while maintaining an 11-9 record. Perhaps when the RockHounds take on the RoughRiders in Frisco (mid June or early August 2006) we should arrange a field trip to go there and show our support. After all, it is not every hobby that can brag

about it's own baseball team.

Upcoming Shows

May 13-14	Corpus Christi, TX	Bead Market, Ramada Inn Bayfront, rebekah@thebeadmarket.net
May 19-21	Grapevine, TX	Bead Renaissance Show, Grapevine Conv. Cntr, 505-894-1293
May 27-28	Fort Worth, TX	Fort Worth G&MC, Amon Carter Exhibit Hall, 817-648-9416
June 2-3	Stafford, TX	Bead Market, Stafford Centre, rebekah@thebeadmarket.net
June 2-4	Austin, TX	The Whole Bead show, Palmer Event Center, 800-292-2577
June 9-11	Stillwater, OK	Rocky Mountain Fed. show, Stillwater G&MS, Payne Cnty Expo, 405-372-8635
June 15-16	Kenner, LA	Bead & gem show, AKS Gem Shows, Pontchartrain Cntr, 504-455-6101
June 16-18	Tulsa, OK	Fem Faire, Expo Square, 503-252-8300
Jul 1-3	Farmington, NM	San Juan County G&MS show, Civic Center, 505-325-3800
Aug 12-13	Addison	Tead Market, Addison Conf. Centre, rebekah@thebeadmarket.net

Metroplex Gem and Mineral and Related Clubs

Texas School of Earth Science (Arlington G&M Club) meets the 1st Tuesday of each month at 7:30 PM at 1408 Gibbins, Arlington
Pleasant Oaks G&M Club meets the 1st Thursday of each month a 7:30 PM at Garland Women's Bldg., 713 Austin, Garland.
Lockheed-Martin Stone Steppers , 2nd Tuesday at 7:30 PM, 3400 Bryant-Irving Road, Fort Worth, TX
Dallas Paleontological Society meets the 2nd Wednesday of each month at 7:30 at Dallas Museum of Natural History, Fair Park.
Dallas G&M Society meets the 3rd Tuesday of each month at 7:00 PM at Ridgewood Rec. Cntr, 6818 Fisher Rd, Dallas.
Dallas Bead Society meets the 3rd Thur. of each month at 7:30 at Walnut Hill Rec. Center, NW corner Walnut Hill & Midway, Dallas
Oak Cliff G&MS meets the 4th Tuesday of each month at 7:30 PM, Ice House Arts Plaza, 1011 Brooklyn, Dallas
Fort Worth G&M Club meets the 4th Tuesday of each month at 7:30 PM at 3545 Bryan Avenue, Fort Worth, TX.

TXI Cement Plant Field Trip

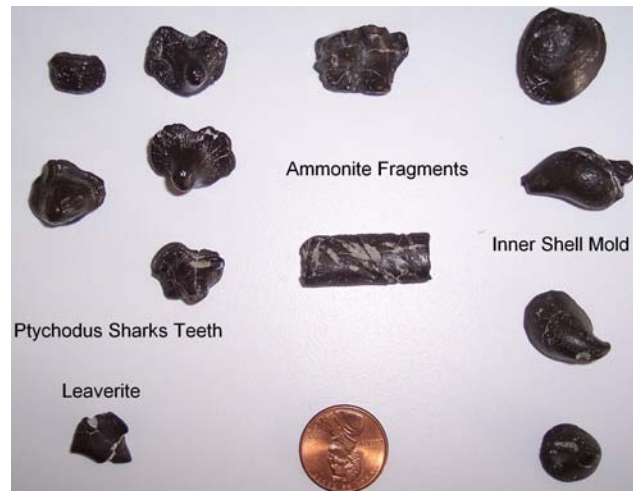
By David Dobson

On April 8, 2006 we had a field trip to the TXI Cement Plant in Midlothian, TX. 30 people had reservations and 27 were in attendance. Many marine fossils and pyrite nodules were found. Everyone had a great time!

We were concerned with the weather forecast the day before. The weather was expected to be 39F with 20 miles an hour winds. Forecasters are seldom wrong, but as luck would have it, we started out the day with the temperature at 59F and winds about 10 miles an hour. By the time we left the weather was very nice.

Collecting could be done in the parking lot along with several parts of the quarry that we were allowed to access. Hard hats and safety glasses were worn.

We were collecting fossils from the Cretaceous Period. This period is between 65 and 135 million years old. Most of the fossils are made of black phosphate. The fossils are found by searching areas that have many phosphate pebbles. As the phosphate pebbles were forming some of the phosphate mineral replaced the marine remains to form the fossils. Shown below are some of the small treasures that we collected.



Many leaverites were found & collected. For those who haven't been teased with this - leave it right where you found it.

Question of the Month - Jade

Don Shurtz, Pleasant Oaks Gem and Mineral Club of Dallas

From the March issue: What is JADE?

Jade is Nephrite. Jade is Jadeite. But until 1863, jade was just jade. It wasn't until 1863 that it was determined that there really were two forms of jade. In 1863 the French mineralogist Alexis Damour, while studying Chinese jade pieces, determined that there were really two forms of jade, jadeite (also called hard jade) and nephrite (also called soft jade). Chemically the two forms of jade are really quite dissimilar. Jadeite is a form of pyroxene, its chemical composition is $\text{NaAlSi}_2\text{O}_6$. Nephrite is a form of amphibole, its chemical composition is $\text{Ca}_2(\text{Mg,Fe})_5\text{Si}_6\text{O}_{22}(\text{OH})_2$. Neither form of jade is not found in crystalline form.



When I think of jade, I think of China. 5000 years ago jade was venerated in China as YU (玉), the royal gem. For most of the 5000 years, the Chinese works of art were formed from nephrite. It is only in the last 400 years that jadeite was imported from Burma to China where it was carved into works of art. During the California gold rush days, many of the miners wondered why many Chinese workers were seen hauling large boulders of green rock rather than panning for gold, but to the Chinese the California nephrite was much more valuable than gold.



When I think of jade I also think of the Aztec and earlier cultures and their fascination with jade. While the predominate type of jade artifacts from China were made from jadeite, the jade artifacts of the early South and Central American cultures were made from nephrite. Many jade artifacts and tools are found in Aztec and earlier ruins. The Olmec artisans were carving jade items over 3000 years ago. To the Aztec people, jade was only worn by royalty, and



only on certain occasions. Jade as a symbol of life and purity. It was only recently that a major source of the Aztec jade, known as blue jade, was re-discovered in Guatemala.

Today when I think of jade I think of British Columbia. Massive quantities of nephrite jade have been discovered in British Columbia and are now being actively mined. Jade is also found in California, South America, China, and Burma. If you want to look for jade in Texas, your best bet is to visit your favorite rock shop, watch for displays of Chinese jade at local museums, or visit some of the markets in the China-town areas of Dallas and Houston. My research does not indicate that either form of jade has ever been found as a raw material in Texas.

Ref:

Jade, <http://en.wikipedia.org/wiki/Jade>

Jade Source, <http://www.jademart.com/source.htm>

Gem by Gem, Jade, <http://www.gemstone.org/gem-by-gem/english/jade.html>

Official Symbols of British Columbia, <http://www.gov.bc.ca/bcgov/popt/bcfact/default.htm>

Re-discovery of Olmec blue jade, <http://www.hgs.org/en/articles/printview.asp?49>

Chinese Jade, <http://www.rightreading.com/writing/jade.htm>

Jade in Mesoamerica, http://www.metmuseum.org/toah/hd/jade2/hd_jade2.htm

Question - of - the - Month for May: What is GLASS?



“WORDS FROM WILLIAM”

William Medford, SCFMS President
From the Mar-Apr SCFMS Newsletter

It is now the Spring show season for many of the Federation clubs. With these shows our clubs are able to make this once a year contact with the general public. There are people who have attended gem and mineral shows for years and were not aware that the show was produced by their local gem and mineral society. This is just one of the reasons that each society needs to have some sort of shirt, vest or jacket for the members to wear while conducting the show. No one will notice a small badge or tag it takes something big and bold to catch their attention. Also there can not be too many signs, banners and/or pendants at the show with the club logo on them.

Does your club work with the local newspaper about getting them to write a show article with pictures to be run after the show? Yes, I did say after the show. In most instances the article will be larger and with several pictures. Usually any prior publicity about the show in the newspaper can only be obtained by paying for an announcement and these ads are usually expensive. The after the show articles are human interest and there is no cost to the club. It has worked for many years for numerous clubs and it will work for your club.

There are several clubs in this Federation that have very active programs with the schools and the scouts. They see this as a way to start an interest in earth sciences at an early age. I know that many, many of our clubs have junior members, in fact, only recently did I attend a meeting where junior members made presentations to the senior membership. To be honest, I had almost forgotten what it was like to hear young people tell how they collect and identify specimens. I ask that you review your junior program and determine if there is more that you can provide to these young people whether they be junior members of your club or students in the local schools.

There have been inquiries from several clubs about the need to continue their Federation insurance. These inquiries are for a multitude of reasons including no longer hosting a show and not participating in field trips. We continue to say that this is the cheapest insurance that your club can obtain. It is not possible to get this kind of insurance when you need it and then drop it when you don't think you need it anymore. It only takes one claim against your club to wipe out the club and cause financial ruin to many of its members.

Most cities will not let you rent any of their public facilities without insurance in amounts up to one million dollars. Our insurance plan is still the best deal around so don't let your club be without it.

When was the last time that your club or a member of your club submitted an article for publication in the Federation newsletter? Has it really been that long or is it that no one can remember? We would like to hear from you and publish your article so that all our clubs can enjoy the information that is contained in your article. Many of you write articles for your club newsletter, but never take the time to write an article for the Federation. Don't you think it is time that we heard from you with an article for publication in the Federation newsletter?

SAFETY REPORT

George Browne, SCFMS Safety Chair
From the Mar-Apr SCFMS Newsletter

Do you realize that you are more likely to be injured or killed in your motor vehicle than you are in any other aspect of our hobby. That's right, the most dangerous thing we do is travel in our vehicles. Look at the statistics. Every year more people die in vehicle accidents than all of the membership of all of our clubs combined. Can you imagine every member of every club in our federations being killed every year? Horrifying, isn't it?

Just as horrifying is the fact that for every person killed in a vehicle crash there are perhaps 10 people seriously and perhaps permanently injured. I bet each of you know someone that has been killed or injured in a car crash but you probably don't know anyone that has been killed or permanently injured in any other "rockhounding" activity. No doubt driving is dangerous.


I think most of our members know how to drive safely but they need to be constantly reminded to drive safely. Be alert, be aware, be cautious, be prepared and be safe. Follow the rules and don't take chances. Remember traveling in your vehicle is the most dangerous thing that you do.

This is the time of the year when we take the longer trips so be sure your vehicle is in good condition. Check your tires, brake fluid and lights. I know you have your vehicle inspected every year but check it yourself anyway. Repair or replace anything that is not safe. Drive safely we enjoy having you around.

George Browne



Joint Workshop Calendar

May 2006

SUNDAY	MONDAY	TUESDAY	WEDNESDAY	THURSDAY	FRIDAY	SATURDAY
	1 <small>Open Shop 6-9 PM</small>	2	3	4 PLEASANT OAKS Gem & Mineral Club Meeting 7:30 PM	5 <small>Cinco de Mayo</small>	6 <small>Open Shop 9AM - 2PM 1st Sat. Trading Day</small>
7	8 <small>Open Shop 6-9 PM</small>	9	10	11	12	13 <small>Open Shop 9AM - 2PM</small>
14  MOTHER'S DAY	15 <small>Open Shop 6-9 PM</small>	16 Dallas Gem & Mineral Club Meeting 7:00 PM SHOP CLOSED	17	18	19	20 <small>Open Shop 9AM - 2PM Armed Forces Day</small>
21	22 <small>Open Shop 6-9 PM</small>	23	24	25	26	27 <small>Open Shop 9AM - 2PM</small>
28	29 <small>Open Shop 6-9 PM Memorial Day</small>	30	31			
<small>Shop Phone Number: 214-349-2022. For Confirmation of Dates & Times contact Brenda Dowell at 972-771-9502</small>						

Joint Workshop Calendar

June 2006

SUNDAY	MONDAY	TUESDAY	WEDNESDAY	THURSDAY	FRIDAY	SATURDAY
				1 PLEASANT OAKS Gem & Mineral Club Meeting 7:30 PM	2	3 <small>Open Shop 9AM - 12PM 1st Sat. Trading Day</small>
4	5 <small>Open Shop 6-9 PM</small>	6	7	8	9	10 <small>Open Shop 9AM - 12PM</small>
11	12 <small>Open Shop 6-9 PM</small>	13	14  <small>Flag Day</small>	15	16	17 <small>Open Shop 9AM - 12PM</small>
18  <small>Father's Day</small>	19 <small>Open Shop 6-9 PM</small>	20 Dallas Gem & Mineral Club Meeting 7:00 PM SHOP CLOSED	21 <small>First Day of Summer</small>	22	23	24 <small>Open Shop 9AM - 12PM</small>
25	26 <small>Open Shop 6-9 PM</small>	27	28	29	30	
<small>Shop Phone Number: 214-349-2022. For Confirmation of Dates & Times contact Brenda Dowell at 972-771-9502</small>						

CHIPS AND CHATTER
Pleasant Oaks Gem & Mineral Club
P.O. Box 831934
Richardson, TX 75083-1934



FIRST CLASS MAIL

To:

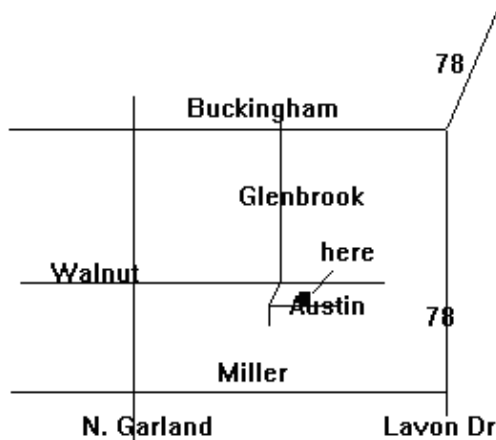
3rd place SCMS 2005 small bulletins
3rd place, AFMS 2005 small bulletins
1st place SCFMS 2004 small bulletins
HM AFMS 2004 small bulletins
2nd place SCFMS 2003 small bulletins
9th place AFMS 2002 small bulletins
2nd place SCFMS 2002 small bulletins

Next Meeting - Thursday, May 4th, 7:30 PM

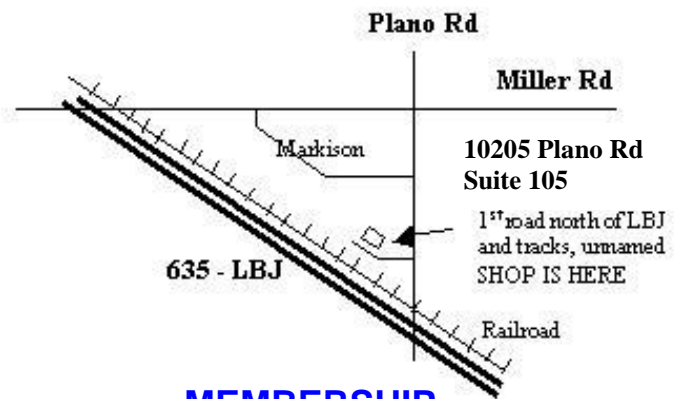
Check out the TXI Field Trip Report and Pictures by David Dobson on page 4!!

PLEASANT OAKS GEM and MINERAL CLUB OF DALLAS

Meeting Map



Joint Club Shop Map



MEETINGS

First Thursday of each month, 7:30 PM
Garland Women's Activities Build
713 Austin, Garland, TX
(Northeast corner of Austin & Glenbrook)

MEMBERSHIP

Single Adult: \$16.50, Junior: \$5.00
Family: \$27.50
(plus badge fee for new members)

Member of

South Central Federation of Mineral Societies

Affiliated with

American Federation of Mineral Societies