

Pleasant Oaks Gem & Mineral Club of Dallas, TX

Chips and Chatter



June 2012
Vol. 46, Issue 6

Feature Article

Article of Interest.....X

Monthly Columns

Area Clubs	6
Birth Stone of the month.....	3
May Program	6
Editors Corner.....	X
Lapidary of the Month.....	2
President's Message.....	X
1 st VP.....	6
Recipe	4
State Stone	3
Secretary Report.....	2
Up-Coming Shows.....	5

Meetings etc.

June issue 2012 by Anita Dresner. Unless otherwise noted, permission granted for non-commercial reproduction of articles provided they remain essentially intact and credit is given to the author and original source. Where noted, the author retains the copyright and must be contacted for permission to reproduce the article. All articles may also be used as reference provided citation is given

Check our website www.pogmc.org
for past months issue of the
Chips and Chatter

Purpose

The Pleasant Oaks Gem and Mineral Club of Dallas is organized for charitable and educational purposes to promote interest in the various earth sciences, in particular those hobbies dealing with the art of cutting and polishing gemstones, the science of gems, minerals and metal crafts, as well as their related fields.

Monthly Meeting

POGM meet the First Thursday each month at 7:30 pm at the Garland Women's Activities Building, 713 Austin, Garland, TX, (Northeast corner of Austin & Glenbrook).

Club Officers for 2011

President: Del Grady
1st VP: Mark Carter, (972) 680-9223
Secretary: Lee Elms
Treasurer: Don Shurtz, (972) 509-2821
Editor: Anita Dresner
E-mail: anitadresner@rocketmail.com

Chips and Chatter Deadline:
The 3rd Thursday of each month

From the Secretary: May 2012 Minutes

Minutes reported by Ling Shurtz in absence of Lee Elms: POGM Secretary

President: The meeting was called to order on Thursday, May 3rd at 7:35 p.m. by the President, Del Grady. The Pledge of Allegiance was led by Mark Carter .

1st VP: Announced program for June program will be our own Warner Regan giving a demonstration on cleaning minerals.

Secretary Report: Del Grady asked if there were any questions or corrections to the minutes of the April meeting as printed in the Chips and Chatter. As there were not comments, Mark Carter made a motion to accept the minutes as printed. The motion was seconded by Warner Ragan. Motion approved.

Treasurer Report: The Treasurers report was unanimously accepted as reported by Treasurer Don Shurtz.

Sunshine Report: Cindy Ragan was at the International Gem and Jewelry Show. Carolyn Grady will be undergoing minor shoulder surgery during the week of 7 May

Old Business: The International Gem and Jewelry Show was held at Market Hall in Dallas on 27, 28, and 29 April. The club booth was well populated. None

New Business : The Dallas G&MS Rock Swap will be Saturday, May 5th The Arlington G&MC Rock Swap will be Saturday, May 12th The Fort Worth G&MS Show will be Saturday and Sunday, May 26 and 27th.

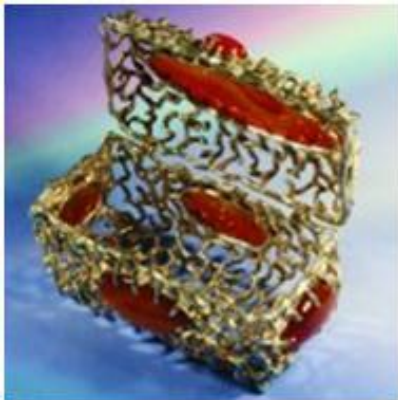
Field Trips:

Refreshment Break

Program: Terri Collier who played a video on making of Chain Mail (a.k.a. Chainmail Chain Maille, and other similar variations) – weaving with jump rings. Terri then displayed and discussed several different examples of her recent work. It was impressive to see the work that Terri does with just simple jump rings. We all extend our thanks to Terri for sharing the video and discussing and displaying her work.

After the program we had our raffle and the meeting was adjourned.

Lapidary of the Month



One of my favorite stones is carnelian agate,” says March Lapidary of the Month Bob Rush, of Valley Springs, California, “especially when it is set in silver. I wanted to make something that used multiple cabs of this agate. I also wanted to do something that utilized a wax pen and a special formula of highly flexible casting wax to ‘draw’ a design. This decorative box project fulfilled all those requirements.

Please go to the reference below and read the article on this photo. It is quite interesting. POGM Editor

Ref: <http://www.rockngem.com/blog/march-2012/>

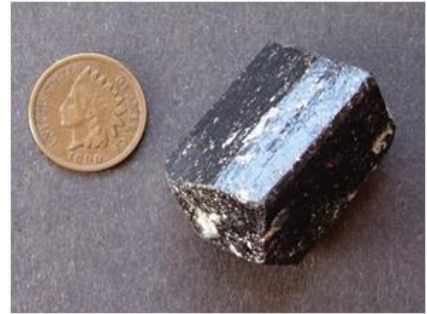
Maine State Gem: Greenstone

Chips and Chatter Editor; Pleasant Oaks Gem and Mineral Club



The state gemstone of Maine is the Tourmaline.

The most attractive forms of tourmaline is multicolor (pictured at left). These colors are produced by nature replacing the black tourmalines NA with Ca and Fe is replaced by Mg, Li or Al. In some instances you may find a piece where fluorine may be found rather than OH grouping. This stone is typically a nine sided prism. Striations on the



Tourmaline, $\text{NaFe}^{2+}_3\text{Al}_6(\text{BO}_3)_3\text{Si}_6\text{O}_{18}(\text{OH})_4$

long axis, A glassy sheen. Hardness scale of 7 to 7.5. Cleavage is poor and is most often found in the color black. It is a fun mineral to play with to pique the interest of young rock hounds; for upon it gaining electrical charges from it being heated or cooled one can see the crystals within pick up particles of paper like a magnet.

Ref:

1. http://geology.about.com/od/regional_geology/ig/stategems/stategemtourmaline.htm

1a. Multi-color Tourmaline Photo courtesy of [Orbital Joe](#) of flickr under Creative Commons license

2. <http://geology.about.com/od/minerals/ig/silicates/minpictourmaline.htm>

2a. Photo (c) 2009 Andrew Alden, licensed to About.com (fair use policy)

<http://0.tqn.com/d/geology/1/0/O/U/1/minpictourmaline.jpg>



June Birthstone of the Month: Pearls

Chips and Chatter Editor, Pleasant Oaks Gem and Mineral Club

Whether it is referred to as a humble beginning or a rough start, the pearl is an incubated piece of something, maybe a tiny fish or parasite looking for a home. Once it has entered the oyster; or maybe a mussel, or clam it is perfectly formed during a preventative process, using many layers of nacre over many years, in order for the oyster to sooth the irritation the unwanted piece creates. Thus, the oyster, in trying to heal its self produces a magnificent gem stone called the Pearl. It has a color range from white, as the most common, to pink, and black.

While natural pearls are quite rare they have been found by divers in Panama, the Persian Gulf and Japanese waters, Australia, and even California; with most pearls being found in waters along the coast of Japan and Australia.

Pearls have been a passion and even an obsession of people throughout the ages. They have been ground up and used in cosmetics and as a medicine to treat heart and stomach conditions. Some cultures swear by pearls as an aphrodisiac. These gems have adorned crowns, clothing, and temples, and were said to be a favorite of Cleopatra.

Ref: <http://www.about-birthstones.com/junebirthstone.html>

The Tasty Corner

Editor POGM Club

Recipe of the Month

Lavender Lemonade

© Taste of Home 2012

Ingredients

2-1/2 cups Water
1 cup Sugar
1 Tbsp Lavender Flowers (dried)
2-1/2 cups Cold Water
1 cup Lemon Juice
Ice cubes

Directions

- 1 In a large saucepan, bring water and sugar to a boil. Remove from the heat; add lavender. Cover and let stand for 1 hour.
- 2 Strain; discarding lavender. Stir in cold water and lemon juice.
- 3 Serve over ice. Yield: 6 servings.

Nutrition Facts: 1 cup = 139 calories, 0 fat, 0 cholesterol, trace sodium, 37 g carbohydrate, trace fiber, trace protein.



Sweet Potato Skins

Ingredients:

2 med Sweet Potatoes	1 Tsp Olive Oil
1 small Onion, diced	1 Clove Garlic, minced
1 bag Baby Spinach	2 Scallions, thinly sliced
2 slices Turkey Bacon	4 oz Low-fat Cream Cheese
¼ cup Low-fat Buttermilk	1 Tsp Salt
1 Tsp Vegetable Oil	
¼ Tsp Freshly Ground Black Pepper	
2 Tbsp Grated Parmesan Cheese	

Preheat the oven to 350 degrees.

Instructions:

1. Place sweet potatoes, single layer, on baking sheet and bake at 350 degrees for 45 minutes or until fork tender.
2. In deep pan heat olive oil, sauté onions 2 - 3 minutes til soft. Add garlic, cook 1 more minute. Add spinach & scallions, cover & cook 3 - 4 minutes, til spinach wilted.
3. In another sauté pan, cook turkey bacon until crisp & transfer to a plate lined with paper towels to drain. When cooled, chop the bacon into small pieces and reserve.
4. When sweet potatoes are done, let stand 5 minutes to cool. Slice each in half, scoop out potato into a bowl. Add cream cheese, buttermilk, salt & pepper, & mash until smooth.
5. Using a pastry brush, coat outside of each potato skin with vegetable oil. Fill each shell with the filling, top with Parmesan cheese. Move stuffed skins back to baking sheet & cook 15 - 20 minutes or until top is golden brown and skins are crispy. Top with bits of turkey bacon and serve.



<http://www.foodrepublic.com/2012/01/05/sweet-potato-skins-bacon-recipe>

2012 Show Dates

June 2012: 9-10—LIVE OAK, TEXAS: Retail show; The Bead Market; Live Oak Civic Center; 8101 Pat Booker Rd.; Sat. 10-5, Sun. 10-4; free admission; glass beads, gemstones, pearls, all kinds of beads, tools, findings, wire, books, beading and jewelry making supplies; contact Rebekah Wills, PO Box 494, Gilmer, TX 75644, (903) 734-3335; e-mail: rebekah@thebeadmarket.net; Web site: www.thebeadmarket.net

July 2012:

14-15—TULSA, OKLAHOMA: Annual show; Tulsa Rock & Mineral Society; Central Park Hall Bldg.; Tulsa State Fairgrounds; Sat. 9-6, Sun. 10-5; free admission; crystals, minerals, jewelry, displays, exhibits, silent auction, raffles; contact Leon Reeder, PO Box 2292, Tulsa, OK 74101, (918) 346-7299; e-mail: okyrocks@peoplepc.com; Web site: www.ttownrockhound.org

21-22—FORT WORTH, TEXAS: Retail show; The Bead Market; Amon Carter Exh Hall; Will Rogers Cntr, 3400 Burnett Tandy Dr; Sat 10-5, Sun 10-4; free admit; gemstones, glass, all kinds of beads & supplies, pearls, findings, lampwork, tools, books; Rebekah Wills, PO Box 494, Gilmer, UT 75644, (903) 734-3335; Web: www.thebeadmarket.net e-mail: rebekah@thebeadmarket.net;

August 2012:

10-12—PASS CHRISTIAN, MISSISSIPPI: Annual show; Harrison Co Gem & Min. Soc.; W Harrison Co. Civic Center; 4470 Espy Ave.; Fri 12-6, Sat 9-6, Sun 10-4; adults \$3, under 10 free; rock ID, grand prize raffle; contact Tomsey Westermeyer, 9270 Serenity Dr., Pass Christian, MS 39571, (228) 586-5279; e-mail: tomsey@cablone.net; Web site: www.gulfportgems.org

11-12—BATON ROUGE, LOUISIANA: Annual show; Baton Rouge Gem & Mineral Society; Marriott Hotel; 5500 Hilton Ave., off I-10; Sat. & Sun. 10-5; adults \$4, children \$3; contact Diana Martin, (225) 931-7543; e-mail: cajunladi@cox.net

17-18—TAHLEQUAH, OKLAHOMA: Annual show; Tahlequah Rock & Mineral Society; Tahlequah Community Bldg.; 300 W. First St.; Fri. 9-6, Sat. 9-5; adults \$3, under 18 free; rocks, minerals, fossils, gemstones, jewelry, auctions, educ. exhibits, demos; Sara Brasel, 14236 Cross Timbers Rd., Tahlequah, OK 74464, (918) 458-0801; e-mail: rockhoundsally@aol.com

18-19—BOSSIER CITY, LOUISIANA: Annual show; Ark-La-Tex Gem & Mineral Soc.; Bossier Civic Center; 620 Benton Rd.; Sat. 10-6; adults \$4, students \$1, under 6 free; demos, youth activities, exhibits, classes, door prizes, dealers; contact Charlie Johns, 9314 Overlook Dr., Shreveport, LA 71118, (318) 687-4929; e-mail: cwsejohns@bellsouth.net; Web: www.larockclub.com

25-26—JASPER, TEXAS: 18th annual show; Pine Country Gem & Mineral Soc.; The Event Center; 6258 Hwy. 190 W, 5 miles west of Jasper; Sat 9-5, Sun 10-5; adults \$2, students & children free; South Central Federation of Mineral Societies annual mtg., Spinning Wheel, silent auction, lapidary demos, hourly door prizes, grand prize raffle, student prize; contact Lonnie Stalsby, (409) 382-5314

25-26—MOUNTAIN HOME, ARKANSAS: Annual show; Ozark Earth Science Gem, Mineral & Fossil Club; Van Matre Senior Center (Cooper Park); 1101 Spring St.; Sat. 10-6, Sun. 10-4; adults \$1, children (12 and under) free; minerals, fossils, beads, jewelry, games; contact Ed Hakesley, 821-1 Alexis Circle, Mountain Home, AR 72653, (870) 424-0956; e-mail: edscamp3@yahoo.com

September 2012

8-9—SILOAM SPRINGS, ARKANSAS: Show & sale; Northwest Arkansas Gem & Mineral Society; NWAGMS Clubhouse; Hwy. 43 North; Sat. 9-5, Sun. 10-5; free admission; tailgate swap, auction, grab bags, assorted activities; contact Dave Leininger, 14029 White Oak Ln., Bentonville, AR 72712, (479) 263-1424; e-mail: hulagrub@aol.com; Web site: www.nwarockhounds.org

29-30—MESQUITE, TEXAS: Annual show; Dallas Gem & Mineral Society; Mesquite Exhibition Hall; 1818 Rodeo Dr.; Sat. 10-6, Sun. 10-5; adults \$8; dealers, gems, minerals, fossils, demonstrations, kids' mine, fluorescent display, geode cracking, gold panning; contact Darrell Harrison, 1808 Tisinger, Dallas, TX 75228; e-mail: bravo1bravo@sbcglobal.net; Web site: dallasgemandmineral.org

29-30—MURFREESBORO, ARKANSAS: Annual show; Crater of Diamonds State Park; Diamond Discovery Center; 209 State Park Rd.; Sat. & Sun. 9-4; 13 and up \$7, children (6-11) \$3, under 6 free; jewelry, rocks, fossils, minerals, gems, demos, free rock, mineral & gem ID, search for diamonds; contact Margi Jenks, Crater of Diamonds State Park, 209 State Park Rd., Murfreesboro, AR 71958, (870) 285-3113; e-mail: margaret.jenks@arkansas.gov; Web site: www.craterofdiamondstatepark.com

October 2012

11-13—MOUNT IDA, ARKANSAS: 26th Annual World Championship Quartz Crystal Digging Contest; Mount Ida Area Chamber of Commerce; Montgomery County Fairgrounds; Fairgrounds Rd.; Thu. -, Sat. 9-3; adults \$75 (late fees apply); dig quartz crystals, keep all you find, meet other miners, maybe win a prize; contact Maureen Walther, Mount Ida Area Chamber of Commerce, Mount Ida, AR 71957, (870) 867-2723; e-mail: director@mtidachamber.com; Web site: www.mtidachamber.com

12-14—MOUNT IDA, ARKANSAS: Annual show; Mount Ida Area C of C; Montgomery County Fairgrounds; Fairgrounds Rd.; Fri - Sat 9-5, Sun. 9-4; free admission; dealers, minerals, jewelry, quartz crystals, quilts, crafts, Treasure Hunt; contact Maureen Walther, Mount Ida Area Chamber of Commerce, Mount Ida, AR 71957, (870) 867-2723; e-mail: director@mtidachamber.com; Web site: www.mtidachamber.com

CHIPS AND CHATTER

Pleasant Oaks Gem & Mineral Club

PO Box 831934

Richardson, TX 75083-1934

FIRST CLASS MAIL



To:

5th Place AFMS 2007 small bulletins
1st place SCFMS 2006 small bulletins
9th place AFMS 2006 small bulletins
3rd place SCMS 2005 small bulletins
3rd place, AFMS 2005 small bulletins
1st place SCFMS 2004 small bulletins
HM AFMS 2004 small bulletins
2nd place SCFMS 2003 small bulletins

Area Clubs

Arlington G&M Club, 1st Tuesday of each month at 7:30 pm, 1408 Gibbins, Arlington, TX

Pleasant Oaks Gem & Mineral Club, Garland Women's Bldg., 713 Austin, Garland, meets the 1st Thur. of each month at 7:30 pm

Lockheed-Martin Stone Steppers, 3400 Bryant-Irving Road, Fort Worth, meets the 2nd Tuesday at 7:30 pm

Dallas Gem & Mineral Society, 10205 Plano Rd, off of Plano Rd, Dallas, TX, meets the 3rd Tue. of each month at 7 pm

Oak Cliff Gem & Min Soc., South Hampton Community Hospital, 2929 S. Hampton Rd, Dls, TX, 4th Tue. each month at 7 pm

Fort Worth Gem & Mineral Club, 3545 Bryan Avenue, Ft Worth, TX, meets the 4th Tuesday of each month at 7:30 pm

Dallas Paleontological Society, EMGI (Bldg. H, Brookhaven College, 3939 Valley View Lane, 75244), 2nd Wed. ea. month at 7:30 pm

PLEASANT OAKS GEM and MINERAL CLUB

First Thursday of each month, 7:30 PM
Garland Women's Activities Building
713 Austin, Garland, TX
(Northeast corner of Austin & Glenbrook)

MEMBERSHIP

Single Adult: \$16.50,
Junior: \$5.00; Family: \$27.50
(Plus badge fee for new members)

Program Presentation

POGM June program will be presented by our own Warner Regan giving a demonstration on cleaning minerals.

Member of

South Central Federation of Mineral Societies

Affiliated with

American Federation of Mineral Societies