

Pleasant Oaks Gem & Mineral Club of Dallas, TX

Chips and Chatter

April 2014
Vol. 48, Issue 4



1st Place, 2013 SCFMS Mini-Bulletin
2nd Place, 2013 AFMS Mini-Bulletin

Member of
SCFMS



Affiliated with
AFMS



Feature Articles

| | |
|------------------------------------|---|
| Birthstone for April, Diamond..... | 4 |
| What is a Girasol..... | 3 |

Monthly Columns

| | |
|------------------------------------|---|
| Minutes of the March, Meeting..... | 2 |
| President's Message..... | 4 |

Notices

| | |
|----------------------|---|
| Meeting..... | 1 |
| METROPLEX Clubs..... | 6 |
| Show Calendar..... | 2 |

Federation Information

| | |
|----------------------------------|---|
| AFMS Endowment Fund Drawing..... | 3 |
| AFMS Convention..... | 5 |
| SCFMS Convention..... | 5 |

Copyright Information

This issue of the Chips and Chatter is copyright © by Don Shurtz. Unless otherwise noted, permission granted for non-commercial reproduction of articles provided they remain essentially intact and credit is given to the author and original source. Where noted, the author retains the copyright and must be contacted for permission to reproduce the article. All articles may also be used as reference provided citation is given.

Purpose

The Pleasant Oaks Gem and Mineral Club of Dallas is organized for charitable and educational purposes to promote interest in the various earth sciences, in particular those hobbies dealing with the art of cutting and polishing gemstones, the science of gems, minerals and metal crafts, as well as their related fields.

Monthly Meeting

Out next meeting will be April 3rd starting at 7:30 PM.

VISITORS WELCOME

Club Officers for 2014

President: Ling Shurtz
1st VP: Mark Carter
Secretary: Lee Elms
Treasurer Del Grady
Editor: Don Shurtz
E-mail: don.shurtz@gmail.com, l.shurtz@gmail.com

**Membership Dues for 2014 are now due,
see web site for form**

**VISIT OUR WEB SITE TO VIEW THE CHIPS AND
CHATTER IN COLOR**

Minutes of the March 6, 2013 Meeting

The meeting was called to order at 7:45pm by Del Grady.

The Pledge to the flag was led by Mark Carter.

SunShine report:

The Dobsons are expecting another baby around August 1st. Congratulations!
Gail Spann is recovering nicely from her recent surgery.
Harvey Thompson, who was 92 years old, passed away in January.

Because of the past two ice storms and missed meetings, we only had the minutes from the November meeting to approve, and they were approved unanimously.

Del reports he has taken care of the club business with the IRS.

The Treasury report was given and approved unanimously.

Election of Board members for 2014: Mark Carter made a motion to accept the slate of officers that was presented. It was seconded and voted unanimously yes.

| | |
|------------------------------|--------------|
| President: | Ling Shurtz |
| V. President: | Mark Carter |
| Treasurer: | Del Grady |
| Secretary: | Lee Elms |
| V. President of Field Trips: | David Dobson |

Check your Chips and Chatter for a list of the upcoming shows and swap meets.

After our refreshment intermission we watched a video about the "Pederneira Mine" in Brazil where they mine Tourmalines. It was titled "A Rainbow of Colors". The video was very interesting and the tourmalines were just gorgeous. And, we learned that several of the tourmalines that came out of that mine and were featured in the video are currently on display at the Perot Museum. It is one thing to look at them in a video, and another to go to the museum and see them up close and personal. The colors of the crystals are something to behold.

The meeting was adjourned at 9:20pm.

Respectfully submitted,
Lee Elms, Secretary

Show Calendar - 2013 Show Dates for April - May 2014

APR 12, North Little Rock, AR, Central Arkansas G&MS, Burns Park, steelpony@aol.com, www.centralarrockhound.org

APR 12-13, Abilene, TX, Central Texas G&MS, Abilene Civic Center, kmcddaniel23@suddenlink.net, rockclub.txol.net

APR 12-13, Siloam Springs AR, Northwest Arkansas G&MS, Community Bldg, hulagrub@aol.com, www.nwarockhounds.org

APR 12-3, Waco, TX, Waco GL&MS, Extraco Events Cntr, <http://www.wacogemandmineral.org/>

APR 18-20, Alpine, TX, Chihuahuan Desert G&MS, Alpine Civic Cntr, paulgraybeal@moonlightgemstones.com

APR 24-25, Houston, TX, Fine Mineral Shows, Embassy Suites, 2911 Sage Rd, www.FineMineralShow.com

APR 26-27, Lubbock, TX, Lubbock G&MS, Lubbock Memorial Civic Center, www.lubbockgemandmineral.org/56th-annual-show

MAY 3, Arlington, TX, Swap Meet, 1408 Gibbins Rd, Acadian1@sbcglobal.net

MAY 24-25, Ft. Worth, TX, Ft. Worth G&MC, Will Rogers Memorial Center, www.fortworthgemandmineralclub.org,
fwgmc@embarqmail.com

MAY 31-JUN 1, DeRidder, LA, DeRidder G&MS, Beuregard Parish Frngnds, avalin1@bellsouth.net, www.lutheransonline.com/gems

Ref:

January / February 2014 SCFMS Newsletter

Rock & Gem Show Calendar, <http://www.rockngem.com/show-dates-display/?ShowState=ALL>

What is Girasol?

Don Shurtz, Pleasant Oaks Gem and Mineral Club of Dallas

What is Girasol? One definition is a “Jerusalem Artichoke”, but as you can guess, that is probably not the definition that a rockhound would be looking for. My 1979 Webster’s and the Merriam-Webster online dictionary define girasol “as an opal of varying color that gives out fiery reflections in bright light”. Wikipedia cautions that one should not confuse a girasol with a fire opal, and you should not confuse a fire opal with precious opal. Fire opal is a transparent or translucent opal, generally yellow, orange, or red and does not have a play of color. Many fire opals come from Mexico. Precious opals, on the other hand, do exhibit a play of color – the more play the better. So now we should know what a girasol, or girasol opal isn’t. According to Wikipedia, girasol an opal that has a bluish glow or sheen that follow a light source as it is moved about. According to Gemdata.org (the new companion to Mindat.org), girasol is common opal that is generally translucent white to light blue. There are two pictures on Gemdat of Girasols, both are a light blue having yellow and red flashes (they are faceted stones so the flashed could be cause by reflection/refraction of light by the facets) with one reported as having a blue sheen that tracks the light source. However, an informative article on Ebay (**who would have thought**), indicates a girasol is a “Yellow to orange variety of [opal] in which the play of color seems to follow the sun as the stone is rotated. Finding an article of this nature on Ebay was quite unexpected, and was well worth reading – see the link below. There are some who try to sell a white translucent quartz that exhibits asterism when cut and polished, found in Madagascar, as girasols – buyer beware. The bottom line is that there is a lot of conflicting information about what a girasol is. Can anyone shed some more light on this subject?

Reference

- Merriam Webster Online Dictionary: <http://www.merriam-webster.com/dictionary/girasol?show=0&t=1395269928>
- Wikipedia, <http://en.wikipedia.org/wiki/Opal>
- Ebay, <http://www.ebay.com/gds/Girasol-Blue-Opal-Girasol-Quartz-Confusion-Explained-/10000000019653178/g.html>
- Gemdata.org, <http://www.gemdat.org/gem-43196.html>

AFMS Endowment Fund Drawing

Summarized from an Email from Catherine Rouchon

Drawing to be held during the AFMS Convention and Show July 12, 2014 Tulsa, Oklahoma

Interest from AFMS Endowment Fund investments is used to support numerous programs that benefit our affiliated member clubs. In the past several years, interest money has:

- Purchased badges for the juniors program which are given at no charge to clubs with organized junior activities programs.
- Digitized the old AFMS slide programs that have been distributed at no charge to the regional federations.
- Purchased new commercially produced programs for the regional federation libraries.
- Supported the Judges Training Program.

Many door prized have been collected, including: A page of mineral stamps, estimated value of this page is \$40 (MWF). Float Copper Specimen-estimated value: \$65(MWF), A Mosasar Tooth from Khouribga, estimated value of \$50. (MWF), and many many more.

Tickets are \$5.00 each or 5 tickets for \$20.00

Deadline to have tickets returned to our regional federation representative, Catherine Rouchon of Baton Rouge G&M, is June 30.

Note: Catherine is looking for a representative from each club to sell the tickets to club members. We should discuss this at the next meeting. DS

President's Message

Ling Shurtz, Pleasant Oaks Gem and Mineral Club of Dallas

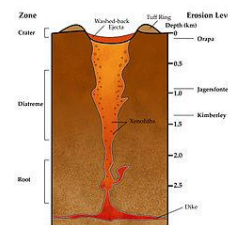
Thank you for your confidence in electing me as your new president. There are a number of issues that need to be discussed at our next meeting. First, our major expense each year is the cost of our meeting room. We need to see if we can find a way to reduce this expense (a smaller room at the Garland Women's Activities Building, at the library, at a restaurant, etc.) Next, we need to update our by-laws to reflect a Second VP for Field Trips. I have received a draft of some proposed changes to the by-laws. We need a committee to review the changes and then get a final version published so it can be voted on. Finally, we have received our IGEM tickets. You need to come to the meeting to pick them up.

Birthstone for April – Diamond

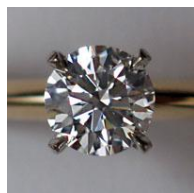
Don Shurtz, Pleasant Oaks Gem and Mineral Club of Dallas

The birthstone for April is Diamond. The word “diamond” comes from the Old French word “diamante, derived from Medieval Latin “diamantem”, derived from Vulgar Latin “adiamentem”, and finally from Latin “adamantem” meaning the hardest material. Diamond's chemical formula is C, the C indicating diamonds are formed entirely of carbon. Diamonds crystals are generally shaped as octahedrons, an 8 sided figure. Diamonds are the defining mineral for Mohs harness 10. The Mohs hardness scale is not linear; diamonds are much harder than corundum, the defining element for Mohs hardness 9. However, not all diamonds are the same hardness. The hardness depends on the purity of the crystal, the orientation of the crystal lattice (how well the layers are oriented), and the orientation of the crystal. The hardest diamonds generally come from the Copeton and Bingara diamond fields in Australia. It is believed that these diamonds are “single-stage growth” meaning the entire crystal was formed at one time. Most diamonds generally show multiple growth stages which generally results in imperfections in the crystal causing them to be less hard.

There are very specific conditions required for the formation of a natural diamond. The temperature must be between 600 and 900 degrees Centigrade and a pressure between 650,000 to 870,000 psi. These conditions are generally found at a depth of 87 to 118 miles below the earth's surface, although some diamonds have been known to form at a depth of 190 miles. These conditions may also occur, although very rarely, when a meteorite hits the earth. Most often the diamonds are transported to the earth's surface by a very deep volcano. The volcano's magma does not directly transport the diamonds to the surface, rather the magma transport diamond bearing rocks and olivine crystals that contain the diamonds to the. Think of this as the diamonds being inside an elevator car (the rock or crystal), and the magma as the source of power to move the cart up to the very top floors. The magma from the volcano cools into a rock know as kimberlite or lamproite. Most diamonds come from mines in Africa. Other productive mines are located in Canada, India, Russia, Brazil, and Australia. Diamonds have been found in the United States in Arkansas, Colorado, Wyoming, and Montana.



The vast majority of all gem grade diamonds are cut and polished in Surat, India. Other major diamond cutting locations include London, New York City, Tel Aviv, and Amsterdam. From there the diamonds go to a very limited number of locations, with most ending up in Antwerp, Belgium (80% of all cut diamonds and 50% of all rough diamonds).



Gem grade natural diamonds come in a wide range of colors. From most common to most rare (for natural diamond), the colors are yellow, brown, colorless, blue, green, black, pink, orange, purple, and red. The brown and yellow color is the presence of the trace element nitrogen in the crystal lattice. Blue diamonds have the trace element boron in crystal lattice. Green diamonds get their color from radiation. Black diamonds (not truly black) have dark colored inclusions which result in a dark appearance. All the rest of the colors are attributed to faults or deformations of the diamond crystal lattice. If you are in the market for a pink or red diamond, be aware that there is a high probability that the diamond is synthetic (man made).

Ref:

1. Wikipedia, <http://en.wikipedia.org/wiki/Diamond#Color>
2. Online Etymology Dictionary, <http://www.etymonline.com/index.php?term=diamond>

Pictures: Pictures from Wikimedia, licensed under Creative Commons Attribution-Share Alike 3.0 Unported

Chips and Chatter

Page 4

April 2014

Pleasant Oaks Gem and Mineral Club of Dallas, TX

Visit us: www.pogmc.org

“Like” us on Facebook

2014 AFMS/RMFMS CONVENTION & SHOW

From the Rocky Mountain Federation Web Site

Dear Fellow Rockhounds:

I want to invite and encourage you to attend the combined American Federation/Rocky Mountain Federation Show & Convention in Tulsa, Oklahoma from July 9 to 13, 2014. The actual show is from July 11 to 13 with various meetings beginning on July 9. The AFMS Show is always a wonderful opportunity to visit with fellow rockhounds from around the country. It is also a chance to share ideas, see new materials, make new friends, and become more familiar with another area of our wonderful country.

The Tulsa Rock & Mineral Society, in conjunction with the RMFMS, has been working hard to provide us with an excellent show; it will be complete with dealers, a variety of exhibits, kid's activities, programs, silent auction, field trips, and more. They will also be providing the usual All-Officers Luncheon on Thursday, the Cracker Barrel on Friday, the Awards Banquet Saturday evening and Breakfast with the Editors & Webmasters on Sunday morning. You should really try to attend one or more these functions as they truly add to the show experience. Of course this is also where the AFMS will conduct the business of our Federation. The AFMS Uniform Rules Committee will meet Wednesday evening with the annual AFMS Board of Directors and AFMS Scholarship Foundation meetings taking place on Thursday.

Once again, I invite you attend the AFMS/RMFMS Show & Convention and am looking forward to visiting with as many of you as I can.

Richard D. Jaeger President,
American Federation of Mineralogical Societies



THE BATON ROUGE GEM & MINERAL SOCIETY SHOW SCFMS REGIONAL CONVENTION SCHEDULE

Location: Marriott Hotel on Hilton Ave.

Show Times:

- Saturday, August 9th: _ 10:00 – 5:00
- Sunday, August 10th – 10:00 – 5:00

SCFMS Activities: Saturday, August 9th in the Beauregard Room:

- Breakfast with the Editors and Webmasters: 8:00
- SCFMS Meeting: 1:00
- SCFMS Awards Banquet: 7: 00

SCFMS Activites, Sunday, August 10th in the Beauregard Room:

- Rolling Rock Club Meeting: 8:00

PLEASANT OAKS GEM and MINERAL CLUB of Dallas

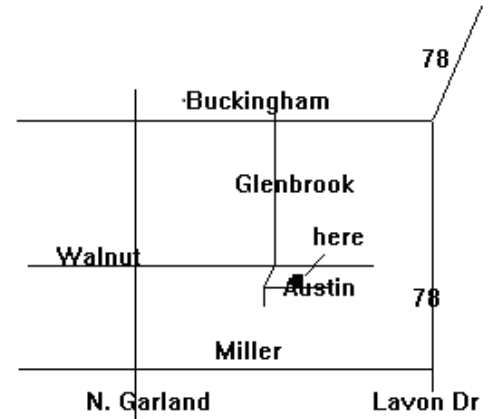


Meetings

First Thursday of each month, 7:30 PM
Garland Women's Activities Building
713 Austin St.
Garland, TX
(Northeast corner of Austin & Glenbrook)

Membership

Single Adult: \$16.00,
Junior: \$5.00, Family: \$27.50
(Plus badge fee for new members)



CHIPS AND CHATTER

Pleasant Oaks Gem & Mineral Club

PO Box 831934

Richardson, TX 75083-1934

To:

Visit an Area Club

Arlington Gem & Mineral Club, 1408 Gibbins, Arlington, TX, 1st Tuesday of each month at 7:30 pm
Dallas Bead Society, The Point at CC Young, 4847 W. Lawther Dr., Dallas, TX meets 1st Saturday of each month at 10:00 am
Dallas Gem & Mineral Society meets the 3rd Tuesday of each month at 7 pm, UT Dallas Research & Operation Center, room 2.209
Dallas Paleontological Society, 2nd Wed. of each month at 7:30 pm, Brookhaven Geotechnology Institute, 3939 Valley View Lane, 75244
Ft. Worth Gem & Mineral Club, meets the 4th Tuesday of each month at 7:30 pm, 3545 Bryan Ave, Ft Worth, TX
Lockheed-Martin Stone Steppers meets the 2nd Tuesday at 7:30 pm, 3400 Bryant-Irving Road, Fort Worth
Oak Cliff Gem & Min Soc., 4th Tuesday of each month at 7 pm, South Hampton Community Hospital, 2929 S. Hampton Rd, Dallas, TX
Pleasant Oaks Gem & Mineral Club meets the 1st Thur. of each month at 7:30 pm, Garland Women's Activities Bldg., 713 Austin, Garland,

Chips and Chatter

Pleasant Oaks Gem and Mineral Club of Dallas, TX

Page 6

Visit us: www.pogmc.org

April 2014

“Like” us on Facebook